

Aviator's Code of Conduct

Preamble:

The Arizona Pilot's Association (APA) and The Recreational Aviation Foundation (RAF) are partnering to advance backcountry aviation in Arizona, and every pilot plays a part in our success. Each of us is an ambassador to the non-flying public, and to the land managers responsible for the airstrips we enjoy. Please do your part by practicing these few rules. We want to be the friendliest and most helpful recreational users these land managers work with!:

Pilots will abide by all State and Federal regulations regarding the use of aircraft.

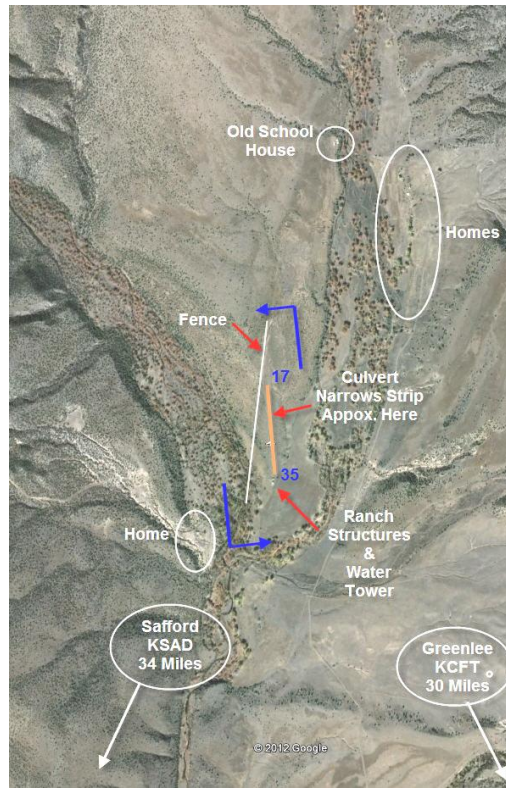
- Act with all possible courtesy to those on the ground who are hunting, horseback riding or observing wildlife, by maintaining reasonable distance and altitude.
- Know wildlife refuge boundaries as well as seasonal areas of wildlife congregation to avoid inadvertent low level over-flights.
- Avoid putting potential stress on wildlife.
- Get appropriate permissions when required, prior to using an airstrip.

Pilots will practice good wilderness and backcountry flying ethics.

- Keep the noise signature of the aircraft to a safe minimum.
- Practice "leave no trace" camping. Fly it in, fly it out.
- Avoid very early morning departures unless safety of flight demands a deviation.
- Be courteous to other users in the area.
- Do not use these airstrips for training purposes or just to say "I've been there."
- Keep the aircraft clean of noxious weed seed to prevent the spread of weeds to backcountry airstrips.
- Participate whenever possible in work events to maintain these airstrips.

Honor the Land Manager's Vision and Rules for the Airstrip

Many hours of negotiations and work go into each backcountry airstrip and trust is earned through fulfilling our commitments to the land managers. A few rogue pilots can destroy this trust and set our backcountry efforts backwards for years. On the other hand, honoring these agreements can go a long way towards these efforts, and even opening new airstrips, so get to know the vision and rules for each airstrip.



Human activity on Eagle Creek dates back 1000 years from the Pueblo Indians to homesteading of the Double Circle Ranch in 1878. The pilot community is playing a critical role in preserving this incredible site through financial and volunteer work.

[If you value this airstrip, please donate to help us preserve it!](#)

Conditions at Double Circle vary daily and the information contained herein may be inaccurate and must not be used for navigation or aviation decision making!

Double Circle Ranch (Eagle Creek) Airstrip Information

AZ66

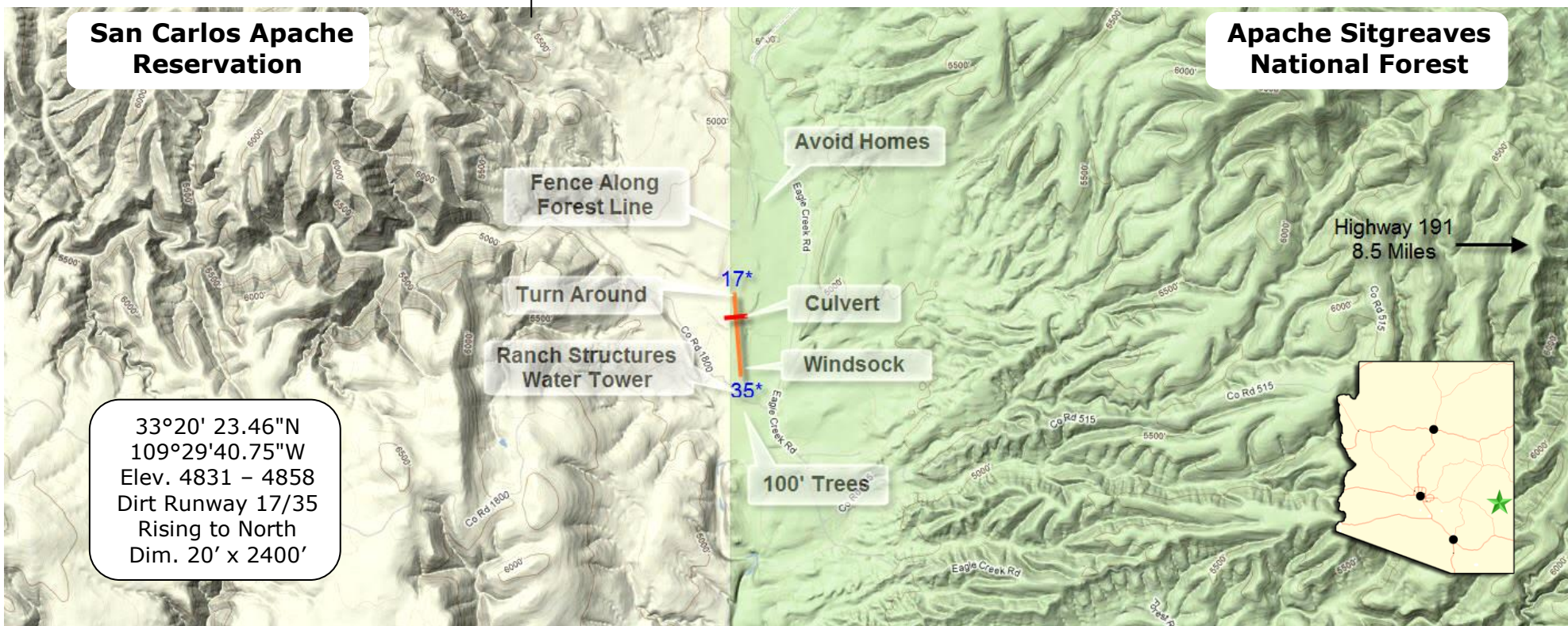
Your Partners in the
AZ Backcountry



www.AZPilots.org



www.theRAF.org



**San Carlos Apache
Reservation**

**Apache Sitgreaves
National Forest**

33°20' 23.46"N
109°29'40.75"W
Elev. 4831 - 4858
Dirt Runway 17/35
Rising to North
Dim. 20' x 2400'

Hazards

Double Circle

Other Important Info

- Varying surface conditions
- Veering off Rwy may damage aircraft
- 20 ft. width with rocks along edges
- Ruts, erosion, rising elevation to north
- Narrowing at culvert
- Crosswinds possible
- High density altitude
- Wildlife

Located on USFS land, Clifton District, 30 miles Northwest of Clifton. It is nestled between year-round flowing Willow and Eagle Creeks at the historic Double Circle Ranch homestead.

FAA Identifier: **Z66 becoming AZ66**
Spring of 2018!

CTAF: 122.9
Pattern: LEFT

Structures & Tower 350' south of
Runway 35 touchdown point
Unmarked Offset Threshold for Rwy 17
Minimum 250' South of Turn Around,
Low Wing Watch for Brush North of Culvert
Strip Runs for 1800' South of Culvert

Before you go:
Contact the APA or RAF at:
520.826.2112

Avoid flying over homes at higher throttle settings! When landing RWY 17, a left downwind east of homes and Eagle Creek Rd. is suggested.

Group events are arranged each year by the Arizona Pilot's Association and the Recreational Aviation Foundation. These events will be posted at:

Group Events:
Parking will be guided by ground crews. DO NOT Taxi off strip to park! Large rocks are hidden in vegetation off of Rwy. Parking is along west side at south end.

- www.AZPilots.org
- www.Facebook.com/AZPilots.org
- www.theRAF.org

Be a good aviation ambassador by practicing the "No Trace" principals, pack in it, pack it out, including trash left by others!