



La Garita Creek Ranch



& Hooper Pool Fly-In

For full details, maps & registration visit:

WWW.FLYCOLORADO.org

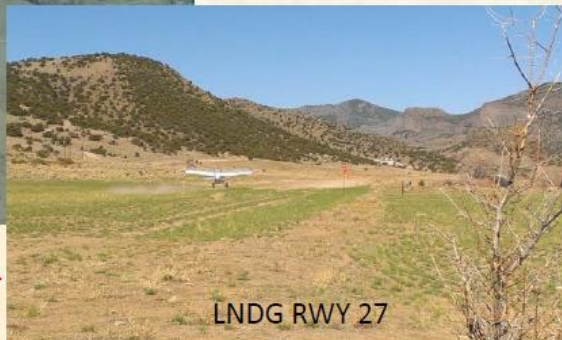
FRI Night May 30 – SUN Morn June 1st, 2014
San Luis Valley - Colorado

Join us for Good Food, Hot Springs, Camping, Cabins, & Fly-outs to nearby BackCountry airstrips



La Garita Creek Ranch Airfield Diagram

Detailed info & pictures available at: www.FlyColorado.Org



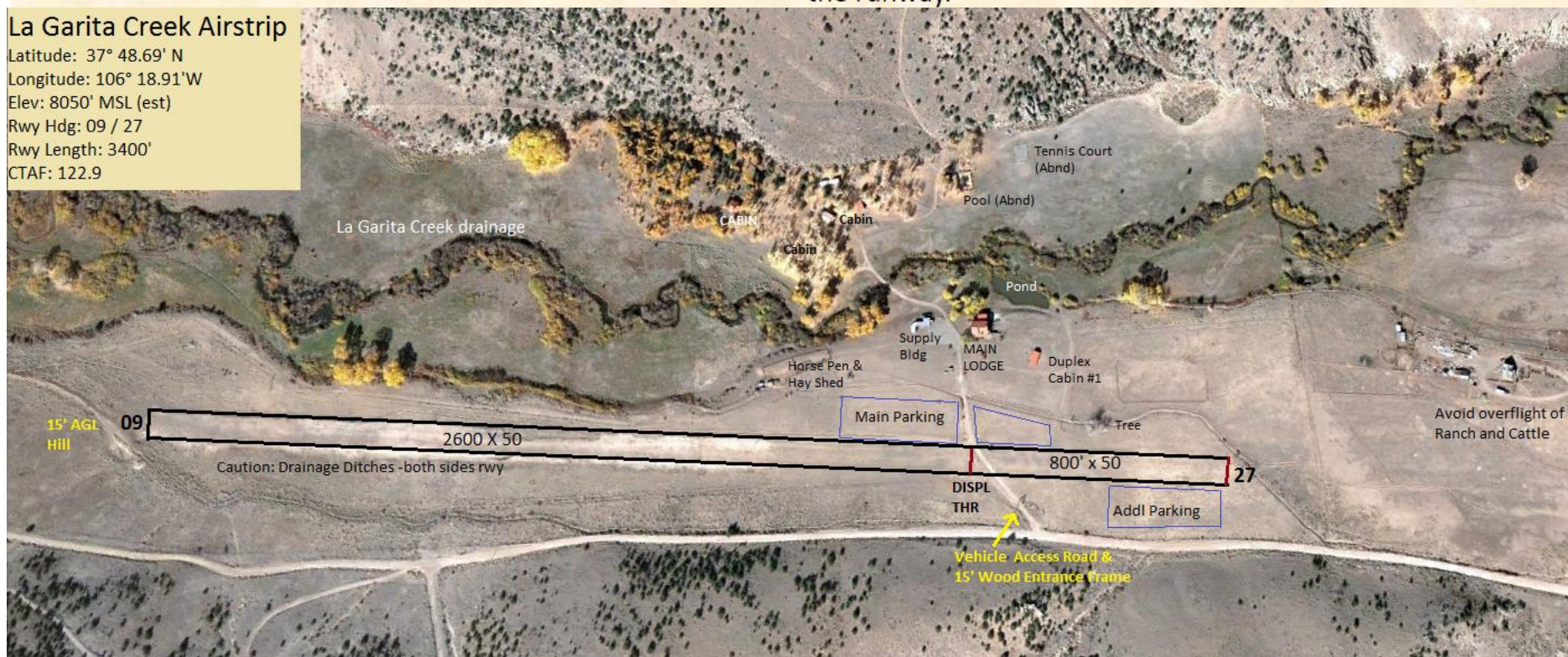
* Complete liability waiver form prior to arrival @ FlyColorado.Org

Airfield Info: This is a challenging high elevation airport located at the base of a canyon within the Rio Grande National Forest. Airport is subject to gusty winds and high density altitudes. Conditions are subject to change without notice.

Runway info: The runway is comprised of dirt and clump grass. Cattle tailings and small rocks may be present on the runway. The 2600' rwy portion that extends from the ranch entrance road to the western threshold has been improved in recent years and is the smoothest and most level portion of the runway recommended for tricycle gear or small tire aircraft. The Eastern 800' section of runway is uneven and has clump grass. Caution for deep ditches on both sides of the runway.

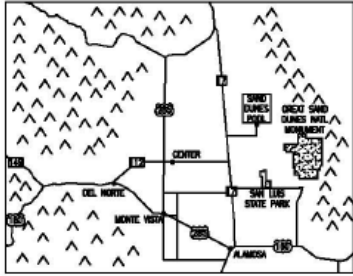
La Garita Creek Airstrip

Latitude: 37° 48.69' N
Longitude: 106° 18.91' W
Elev: 8050' MSL (est)
Rwy Hdg: 09 / 27
Rwy Length: 3400'
CTAF: 122.9



Hooper Sand Dunes Pool Airstrip Map – Visit www.FlyColorado.org for more details

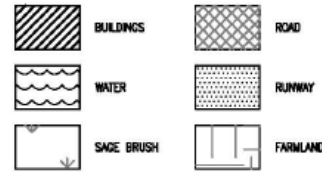
VICINITY MAP



GENERAL NOTES

1. THIS IS A PRIVATE UNCHARTED AIRFIELD. LAND AT YOUR OWN RISK.
2. THE RUNWAY SURFACE IS SMOOTH AND CONSISTS OF HARD PACKED DIRT WITH AREAS OF SOFT SAND.
3. CALL (719) 378-2807 FOR CURRENT AIRFIELD CONDITIONS.
4. BRING YOUR OWN TIE-DOWNS AND CHOCKS.
5. CHECK AIRCRAFT PERFORMANCE FOR HIGH DENSITY ALTITUDE PRIOR TO ARRIVAL/DEPARTURE.
6. RECOMMEND DEPART TO THE EAST AND LAND TO THE WEST. LEFT HAND TRAFFIC PATTERN.
7. AVOID LOW FLIGHTS OVER THE POOL AND CAMPING AREA.
8. BE EXTREMELY CAUTIOUS FOR ALL MARKED AND UNMARKED OBSTACLES.
9. NO CAMPING ALLOWED ON THE AIRFIELD.

LEGEND



HAZARDS

- 35' AGL POWER LINE \approx 90' WEST OF WEST THRESHOLD
- 45' AGL POWER LINE \approx 2,200' EAST OF EAST THRESHOLD
- 45' AGL POWER LINE \approx 985' SOUTH OF THE RUNWAY
- 5' AGL FENCE \approx 35' FROM EAST AND WEST THRESHOLD
- FARM EQUIPMENT FREQUENTLY STAGED NEAR THE AIRFIELD

HOOPER POOL AIRSTRIP

ARP: N37°46.851' W105°51.014'
 ELEV: \approx 7,550'
 RWY HDG: 07/25
 RWY LENGTH: \approx 2,600'
 FREQ: CTAF 122.90

